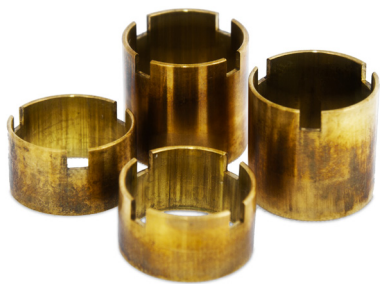


## PROCEDURE FOR INSERTION & REMOVAL OF THE XO XONS



**Step 1** Find your approximate tuning slide position for most of your playing situations.

**Step 2** If your tuning slide is generally pulled out more than  $\frac{1}{4}$ " (in most playing situations) you should use the  $\frac{1}{2}$ " set. If it's pulled out less than  $\frac{1}{2}$ " then you should use the  $\frac{1}{4}$ " set. It is very important to differentiate the upper and lower stabilizers. *It is imperative to note that the upper stabilizer is marked with 3 notches, while the lower stabilizer is marked with 4 notches.* Even though the inner diameter of each stabilizer is the same, the outer diameter of each stabilizer is different. The outer diameter of the upper stabilizer is larger than the outer diameter of the lower stabilizer. Do not attempt to slide the upper stabilizer into the lower tube; it will get stuck.

**Step 3** Apply tuning slide grease to both XONS. Insert the upper and lower stabilizers with the notched side in first. After inserting the stabilizers, you will notice that you will be unable to push your tuning slide all the way in. This is a good thing; you have decreased the gap while still maintaining your approximate tuning adjustment position.

**Step 4** When removal of the XONS is necessary, use the hook provided to extract the stabilizer. This is where the notches come into play; with the hook, feel for the notch and gently slide the stabilizer out. If you decide that you enjoy the playing characteristics of the 1600I when using the XONS, it is suggested that they be removed and cleaned periodically in conjunction with your leadpipe and tuning slide at least once a week.

The XO Nodal Stabilizers may not be for everyone. However, we're proud to give you the means by which to achieve two completely different slotting "feels" throughout the entire playing register of your new trumpet. Decide for yourself which way works for you, and enjoy!

**Be certain to follow the proper procedures for inserting and removing your XONS inserts. Incorrect insertion may void your warranty.**

## KEEP UP WITH JUPITER XO



## LOOK US UP ON FACEBOOK GROUP JUPITERXO

We invite you to find us on Facebook to share your Jupiter XO story with us.

We welcome your images, videos and comments.



Professional. By Design.

## ABOUT YOUR NEW XO 1600I ACCESSORY KIT



Professional. By Design.

**CONGRATULATIONS** on purchasing the new Jupiter XO Series 1600I Bb trumpet! We at Jupiter are extremely proud to offer you this new instrument packed with special features that are unique to this amazing trumpet. Many thanks to educator, author, and recording artist Roger Ingram for his valued assistance in developing what he states is “without a doubt, the best instrument I have ever played”.

Included with your new 1600I you will find a unique accessory kit filled with many special products that will enhance the playability of your instrument including the revolutionary *XO Nodal Stabilizers (XONS)*. Installation of these stabilizers changes the “feel” of the instrument and assists the performer to more accurately slot their partials. The 1600I also works well without the XONS. It’s like two horns in one. Try this new trumpet with and without the stabilizers and decide for yourself which you prefer.

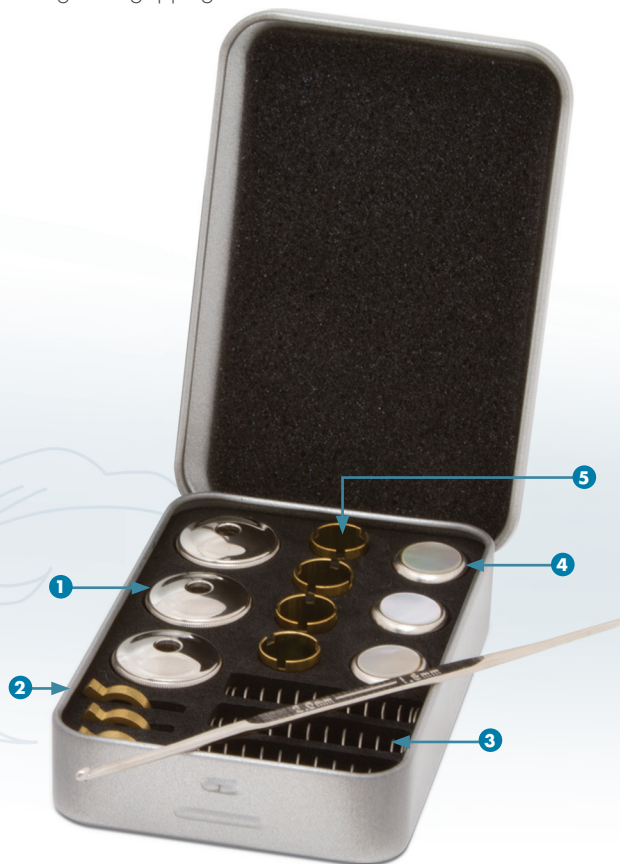
**WEIGHTED VALVE CAPS**<sup>1</sup> – Included in your accessory kit you will find specially designed, weighted valve caps. The weighted bottom caps add additional mass to the instrument allowing greater player flexibility in slotting and centering pitches.

**BRASS VALVE GUIDES**<sup>2</sup> – Your 1600I is equipped from the factory with delrin valve guides. Delrin offers a very quiet operation and smooth valve action. To further enhance playability and tone many players enjoy the traditional brass valve guide as a means to add additional density to the instrument. The subtle nuance of these guides also aids the resonant qualities of the horn while adding a cutting edge when playing in the higher registers.

**LIGHTWEIGHT VALVE SPRINGS**<sup>3</sup> – The touch of the valve is as important to the player as the sound that is created. To offer greater tactile sensitivity, the 1600I includes both standard and lightweight springs providing a custom feel to suit each individual’s playing desires.

**ALL METAL FINGER BUTTONS**<sup>4</sup> – An integral part of the tactile experience is of course the finger buttons. Many players prefer the classic feel of the all metal button. To offer full variety of touch both pearloid and metal finger buttons are included to compliment the needs of the most demanding performers.

**XO NODAL STABILIZERS (XONS)**<sup>5</sup> – When the main tuning slide is adjusted to tune any brass instrument, a gap is created. There can actually be an increase in inner bore diameter of up to 0.050 (50 thousandths, almost 1/8 of an inch) when adjusting your tuning slide. This could result in poor slotting, uneven pitch, and difficulty in accessing the upper register. The purpose of the XONS are to enable a player to correctly tune their instrument, yet maintain a desirable small gap. This is accomplished by inserting the proper length stabilizer (in accordance to how far a performer pulls out their tuning slide) of equal inner-diameter into both ends of the tuning slide. This is the basis of the XO Nodal Stabilizer (XONS) concept. The small gap at the tuning slide helps a performer more accurately slot their partials. When performing in the upper and extreme upper registers of the trumpet, the advantages a small gap offers the player become more apparent the further they ascend. By inserting the XONS into your new XO 1600I, you get to enjoy efficient tuning slide gapping.



*XO 1600I Accessory Kit*



I have been playing the trumpet for over 40 years and have experimented with almost every make and model ever manufactured. I have even owned a few tunable bell trumpets. What I don’t like about tunable bell trumpets is this; they lack the tensile strength and rigidity that a normally braced trumpet offers. I have always felt that the standard double bracing of a non-tunable bell trumpet helps to move the sound forward. That is why the XO Nodal Stabilizer (XONS) concept is such a beautiful thing; you get the best of both worlds. By inserting the XONS into your new XO 1600I, you get to enjoy efficient tuning slide gapping and the tensile- strength rigidity or normal, sturdy bell bracing.

I have always known, and it has been further verified throughout the development and testing of the 1600I, that the trumpet does indeed play more efficiently with a small gap at the tuning slide. The concept of the XONS is simply a logical extension of the theory of mouthpiece leadpipe gapping at the receiver. This theory has been employed for decades, thus the availability of interchangeable sleeves for brass instrument mouthpiece shanks. The end result is a more stable, responsive instrument.

**Roger Ingram**

Educator, Author, Recording Artist, and Lead Trumpet with the Orchestras of Harry Connick, Jr., Maynard Ferguson, Woody Herman, Jazz at Lincoln Center and Ray Charles.<http://RogerIngram.com>